



Product Service

# CERTIFICATE

No. B 14 09 39314 123

**Holder of Certificate:** **SPG Co., Ltd.**  
 628-11 Gojan-Dong  
 Namdong-Ku, Incheon  
 REPUBLIC OF KOREA



**Certification Mark:**



**Product:** **Motor, drive-  
 (Induction Motors)**

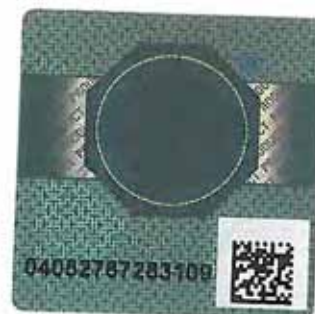
The product was tested on a voluntary basis and complies with the essential requirements. The certification mark shown above can be affixed on the product. It is not permitted to alter the certification mark in any way. In addition the certification holder must not transfer the certificate to third parties. See also notes overleaf.

**Test report no.:** CPSA01089714

**Valid until:** 2019-09-24

**Date,** 2014-09-25

  
 ( Ian Young-Yul Hwang )



Page 1 of 3



Product Service

**CERTIFICATE**

No. B 14 09 39314 123

**Model(s):**

S9luvwxyz, S8luvwxyz, S7luvwxyz, S6luvwxyz  
 Remark: 1) "u" represents "3 to 180" according to output power.  
 2) "v" represents "A to Z" or blank according to shaft type.  
 3) "w" represents "A to Z" according to rated voltage and frequency.  
 4) "x" represents "A to Z" or blank according to gear type.  
 5) "y" represents "-" or blank according to option.  
 6) "z" represents "A to Z", "0-9" or blank according to special type's option.

**Parameters:**

Rated voltage:	See attachment
Rated frequency:	50/60 Hz
Rated power:	See attachment
Duty types:	S1 or S2 (30 min.)
Thermal classification:	Class 130(B)
Degree of protection against ingress of liquids:	Max. IP54, Min. IP23

**Tested according to:**

EN 60204-1/A1:2009  
 EN 60034-1:2010

**Production Facility(ies):**

39314, 59343



Attachment

No. B 14 09 39314 123

Parameters:

I. Induction Motor

Model	Rated Voltage*	Rated power input	Duty
S6luvwxyz	100-120 V~	3 or 6 W	S1, Continuous
	200-240 V~	6 W	S1, Continuous
S7luvwxyz	100-120 V~	15 W	S1, Continuous
	200-240 V~	15 W	S1, Continuous
S8luvwxyz	100-120 V~	15 or 25 W	S1, Continuous
	200-240 V~	15 or 25 W	S1, Continuous
	200-240 V~(3ph.)	25 W	S1, Continuous
	380-440 V~(3ph.)	25 W	S1, Continuous
S9luvwxyz	100-120 V~	40, 60, 90, 120, 150 or 180 W	S1, Continuous
	200-240 V~	40, 60, 90, 120, 150 or 180 W	S1, Continuous
	200-240 V~(3ph.)	40, 60, 90, 120, 150 or 180 W	S1, Continuous
	380-440 V~(3ph.)	40, 60, 90, 120, 150 or 180 W	S1, Continuous

Note: \*\* 1) 100-120 V : Can be marked 100-120 V or 100V and/or 110 V and/or 115V and/or 120V  
 2) 200-240 V : Can be marked 200-240 V or 200V and/or 220 V and/or 230V and/or 240V  
 3) 380-440 V : Can be marked 380-440 V or 380V and/or 400 V and/or 415V and/or 440V

II. Induction Brake Motor

Model	Rated Voltage*	Rated power input	Duty
S8luvwxyz	100-120 V~	25 W	S2, 30 min
	200-240 V~	25 W	S2, 30 min
	200-240 V~(3ph.)	25 W	S2, 30 min
	380-440 V~(3ph.)	25 W	S2, 30 min
S9luvwxyz	100-120 V~	40, 60, 90, 120, 150 or 180 W	S2, 30 min
	200-240 V~	40, 60, 90, 120, 150 or 180 W	S2, 30 min
	200-240 V~(3ph.)	40, 60, 90, 120, 150 or 180 W	S2, 30 min
	380-440 V~(3ph.)	40, 60, 90, 120, 150 or 180 W	S2, 30 min

Note: \*\* 1) 100-120 V : Can be marked 100-120 V or 100V and/or 110 V and/or 115V and/or 120V  
 2) 200-240 V : Can be marked 200-240 V or 200V and/or 220 V and/or 230V and/or 240V  
 3) 380-440 V : Can be marked 380-440 V or 380V and/or 400 V and/or 415V and/or 440V